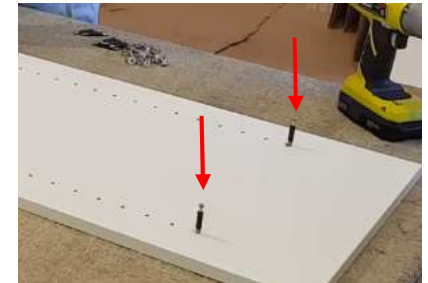


INSTALLATION INSTRUCTIONS

MINI WARDROBE SERIES

wardrobes
online

1. If your mini wardrobe includes a shelf tower, lie side panels on the floor and insert cam pins into all holes where the locking shelves will sit.



2. In the shelves, insert the Cams with arrow facing outwards.



3. Slot shelves into cam pins on one panel, and screw cams to tighten. Ensure the white edge of the shelf is at the front of the tower, and that the cams are facing the ceiling at the top of the tower, and the cams are facing the floor on the lower half of the tower.
Once the shelf is in place, tighten the cams with screwdriver. Be careful not to overtighten.
Repeat with other side panel by lying the panel on top of the open shelves and slotting the cam pins into the second panel. Screw cams to tighten. Take care not to overtighten cam.



4. Position assembled tower in wardrobe and use econo brackets (supplied) to fix the tower to the back wall.



5. Measure and cut top shelf and rails to fit.

Refer to Top Shelf Installation, and Hanging Rail Installation pages for information about cutting and installation. If you have purchased a top shelf and rail (no tower), you can install your shelf and rails at any height. Standard top shelf heights are 2m and 1.8m from the floor. This gives adequate hanging length. However if you are installing a child's wardrobe, you might like to consider lowering the rail and shelf heights to suit.

Tip: Measure the clothes you intend on storing in the wardrobe before you install rails.



6. Once everything is in place including the top shelf, secure the system to your gibbed walls with the econo brackets supplied. Where possible, fix econo bracket into studs. Use a 5mm drill bit. We recommend using 2 econo brackets per tower.



INSTALLATION INSTRUCTIONS

TOP SHELF

wardrobes
online

1. Measure the width of the wardrobe at the height the top shelf is to be installed.
Wall Brackets are marked "L" and "R" for left/right, and have a closed rim at the front and an open end at the back which is designed so your top shelf sits hard against the back wall and the front rim stops the shelf falling forwards. Wall brackets are 3mm deep each, so if your top shelf will run from wall-to-wall you will need to deduct 6mm from this measurement to get your final top shelf length.
Example: If your wall-to-wall measurement is 2000mm wide, then you need to cut your top shelf 1994mm wide. If you are using two top shelves together (ie for wardrobes wider than 2.4m, or for walk-in wardrobes where top shelves meet adjacently) then you will need to apply a 3mm deduction where a bracket is to be used.



2. Mark on your top shelf where you need to cut. Tip: Use masking tape along the cut line. This will give the melamine board a cleaner finished edge. Cut the top shelf using a saw. We recommend a minimum of an 8pt saw to cut melamine.



3. Place top shelf in position with the bracket, and pencil mark the position of the bracket (use a spirit level to ensure your top shelf is level). Remove the top shelf, and re-align the bracket with your pencil marks. Use the bracket as a template to mark out the holes for the screws.



4. Install wall plugs where required (gibbed walls where studs not available), and screw bracket onto wall.



5. Insert top shelf into brackets.

Screw top shelf onto top of the tower's vertical panels – use a 25mm screw for this. If you have limited space above the top shelf and cannot access this area with a screw driver, then secure the top shelf from underneath to the back wall with an Econo bracket (supplied).



6. Secure the top shelf to the wall using the Econo Brackets (pictured). We recommend 2 per top shelf. These can be installed at either end of the wardrobe, or in areas requiring more support.

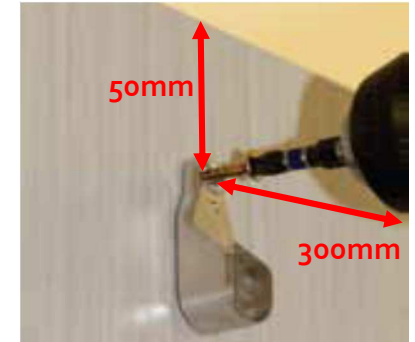


INSTALLATION INSTRUCTIONS

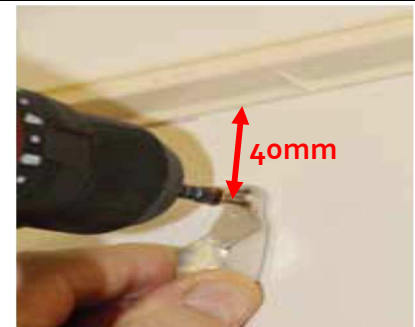
HANGING RAILS

wardrobes
online

1. For Top Height Rail: Measure 300mm from the back of the tower/wardrobe panel.
From that mark measure 50mm down and mark with a pencil. If you are measuring from underneath a top shelf bracket, measure down 40mm from the bottom of the shelf bracket (this allows 10mm for the bracket).
Install wall plugs where required for a stronger install.
Screw the silver bracket into the wall.
For Mid Height Rail: Measure 300mm from the back of the tower/wardrobe panel.
From that mark, measure 1000mm down from the top-height-rail.
Note: because floors are sometimes not level we recommend you check heights and levels as you proceed through the installation process



2. Measure the length between the installed rail brackets to get your rail length.
*Tip allow 2.5mm for each rail end, so a 600mm wide gap between two walls you would cut the rail at 595mm



3. Mark on rail your measured length and cut the rail using a hacksaw (we recommend a minimum of an 8pt saw).
Once cut, slot rail into rail brackets.

